



PROPOSED SOUTH ELEVATION

PROPOSED WEST ELEVATION

RICH MARKUS  
ARCHITECTS  
2601 P STREET NW, 2ND FLR  
WASHINGTON DC 20007  
202.333.2877 V

SOUTH CAPITOL  
STREET SW,  
WASHINGTON D.C.

ELEVATIONS

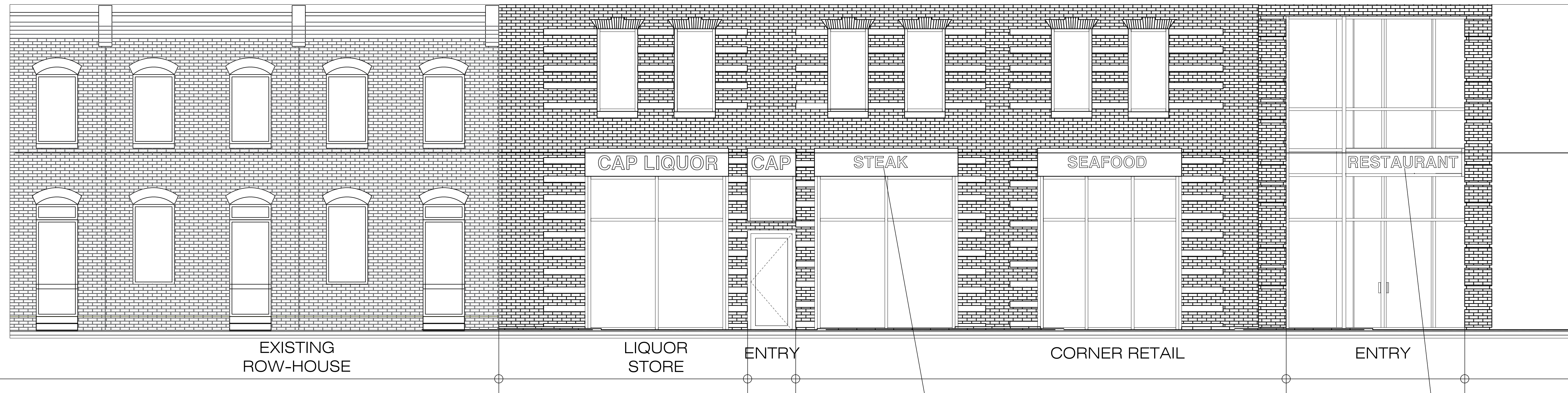
NO.	REVISIONS

1/4" = 1'-0" SCALE

09.02.2022 ISSUE

A302  
ZONING COMMISSION  
DRAWING NUMBER

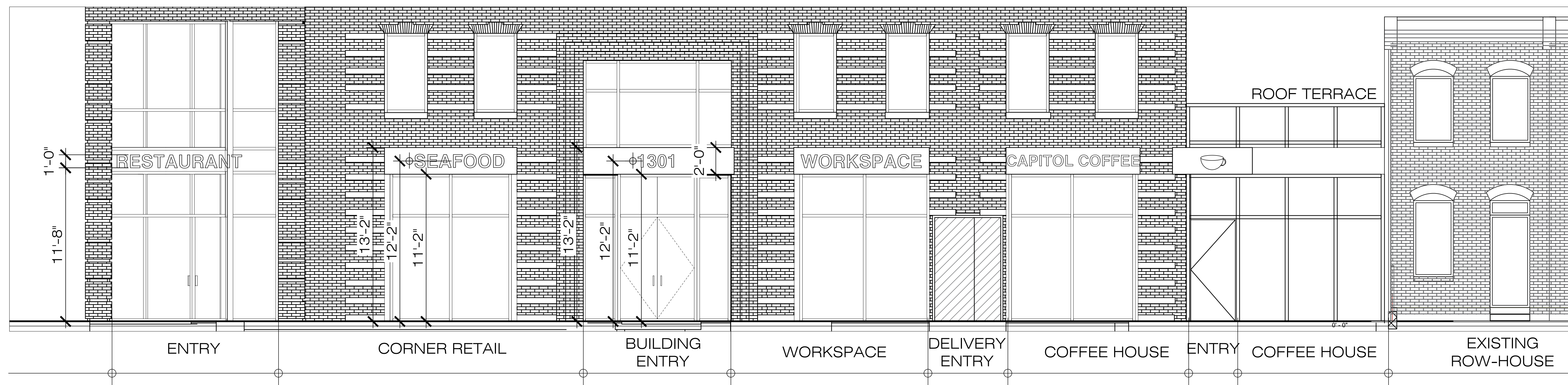




S. CAPITOL ELEVATION

INDIVIDUAL LETTERS HALO-LIT ON SOLID SIGNAGE BAND OVER WINDOW BAYS

INDIVIDUAL LETTERS MOUNTED IN OPEN FRAME



N ST. ELEVATION

RICH MARKUS  
ARCHITECTS  
2601 P STREET NW, 2ND FLR  
WASHINGTON DC 20007  
202.333.2877 V

SOUTH CAPITOL  
STREET SW,  
WASHINGTON D.C.

SIGNAGE  
ELEVATION

NO.	DATE	REVISIONS

1/4" = 1'-0" SCALE

09.02.2022 ISSUE

A303 DRAWING NUMBER























SOUTH CAPITOL ST. SW VIEW

RICH MARKUS  
ARCHITECTS  
2601 P STREET NW, 2ND FLR  
WASHINGTON DC 20007  
202.333.2877 V

SOUTH CAPITOL  
STREET SW,  
WASHINGTON D.C.

PROPOSED VIEW

NO.	REVISIONS

AS SHOWN SCALE

09.02.2022 ISSUE

A501

DRAWING NUMBER

















N STREET OUTDOOR SPACE

RICH MARKUS  
ARCHITECTS

2601 P STREET NW, 2ND FLR  
WASHINGTON DC 20007  
202.333.2877 V

SOUTH CAPITOL  
STREET SW,  
WASHINGTON D.C.

PROPOSED DETAIL  
VIEWS

NO.	DESCRIPTION	DATE

--

AS SHOWN

09.02.2022

A505









SOUTH CAPITOL STREET VIEW

RICH MARKUS  
ARCHITECTS  
2601 P STREET NW, 2ND FLR  
WASHINGTON DC 20007  
202.333.2877 V

SOUTH CAPITOL  
STREET SW,  
WASHINGTON D.C.

PROPOSED VIEW

NO.	DESCRIPTION	DATE



AS SHOWN

09.02.2022

A507

DRAWING NUMBER





N- STREET NIGHT VIEW

RICH MARKUS  
ARCHITECTS

2601 P STREET NW, 2ND FLR  
WASHINGTON DC 20007  
202.333.2877 V

SOUTH CAPITOL  
STREET SW,  
WASHINGTON D.C.

PROPOSED VIEW

REVISIONS

AS SHOWN SCALE

07.18.2022 ISSUE

A508

DRAWING NUMBER





NIGHT VIEW

RICH MARKUS  
ARCHITECTS

2601 P STREET NW, 2ND FLR  
WASHINGTON DC 20007  
202.333.2877 V

SOUTH CAPITOL  
STREET SW,  
WASHINGTON D.C.

PROPOSED VIEW

NO.	DESCRIPTION	DATE

AS SHOWN

07.18.2022

A509

DRAWING NUMBER



Questions?